

# Village of Phoenix

Between 1750 and 1763, the Oswego River and surrounding waterways became the site of critical events of the French and Indian War. British troops on their way to Fort Ontario erected a small fort to protect ammunition and supplies at the junction of the Oneida, Seneca, and Oswego Rivers. This junction, about two miles south of the Village of Phoenix, is known as Three Rivers Point.



Alexander Phoenix purchased the patent for Phoenix in 1832, and the Village was laid out in blocks in 1836 and incorporated in 1846. The 524-mile long Erie Canal system, comprised of both natural and manmade waterways, was completed in 1825 and provided a critical transportation link between the Atlantic Ocean at New York City and the Great Lakes. As a result, commercial shipping opportunities in New York State became limitless. With the tremendous success of the canal system, hamlets and villages began to develop alongside the canal. From the early nineteenth century, saw mills, grist mills, and later (1850-1873) a vibrant boat building industry developed along the Oswego riverfront.



Along the Oswego River, the twenty-four mile long Oswego Canal was completed in 1917, connecting the Erie Canal with Lake Ontario. The construction of dams and locks and dredging of the river channel provided a uniform width and depth for the canal and allowed for expanded use of the waterway. Locks along the canal were filled or emptied, providing passage for



vessels from one level to the next (like a series of steps) to accommodate the change in elevation. Lock 1 of the Oswego Canal is located within the limits of the Village of Phoenix. Phoenix, primarily an industrial hub, focused on the manufacture of goods and services to be shipped along the canal to westernmost locations. A steamboat made daily trips on the Oswego Canal to Syracuse, and a stage from Phoenix provided connection to the Oswego and Syracuse branch of the Delaware, Lackawanna and Western Railroad.

The early Canal Waterfront District in the Village of Phoenix consisted of brick buildings in rows parallel to the canal. Buildings had entrances both along the streetfront and facing the canal. Mills, industrial and retail uses lined the canal, with residential uses developing farther from the waterfront area. By the late 1800s, the Village of Phoenix was a community rich in both economic opportunity and cultural experience.

In the late 19th century, several major fires reshaped the character and appearance of the village. The Great Fire of 1916 was the most devastating, destroying eighty buildings (two thirds of the taxable valuation of village property), and over many years following the fire of 1916, much of the industry that characterized the Phoenix canalfront left the village. Today, the Village of Phoenix remains a canal community, rich with 19th century history and character. Most of the buildings that remain in the Canal Waterfront District of Phoenix today date to between 1917 and 1929.



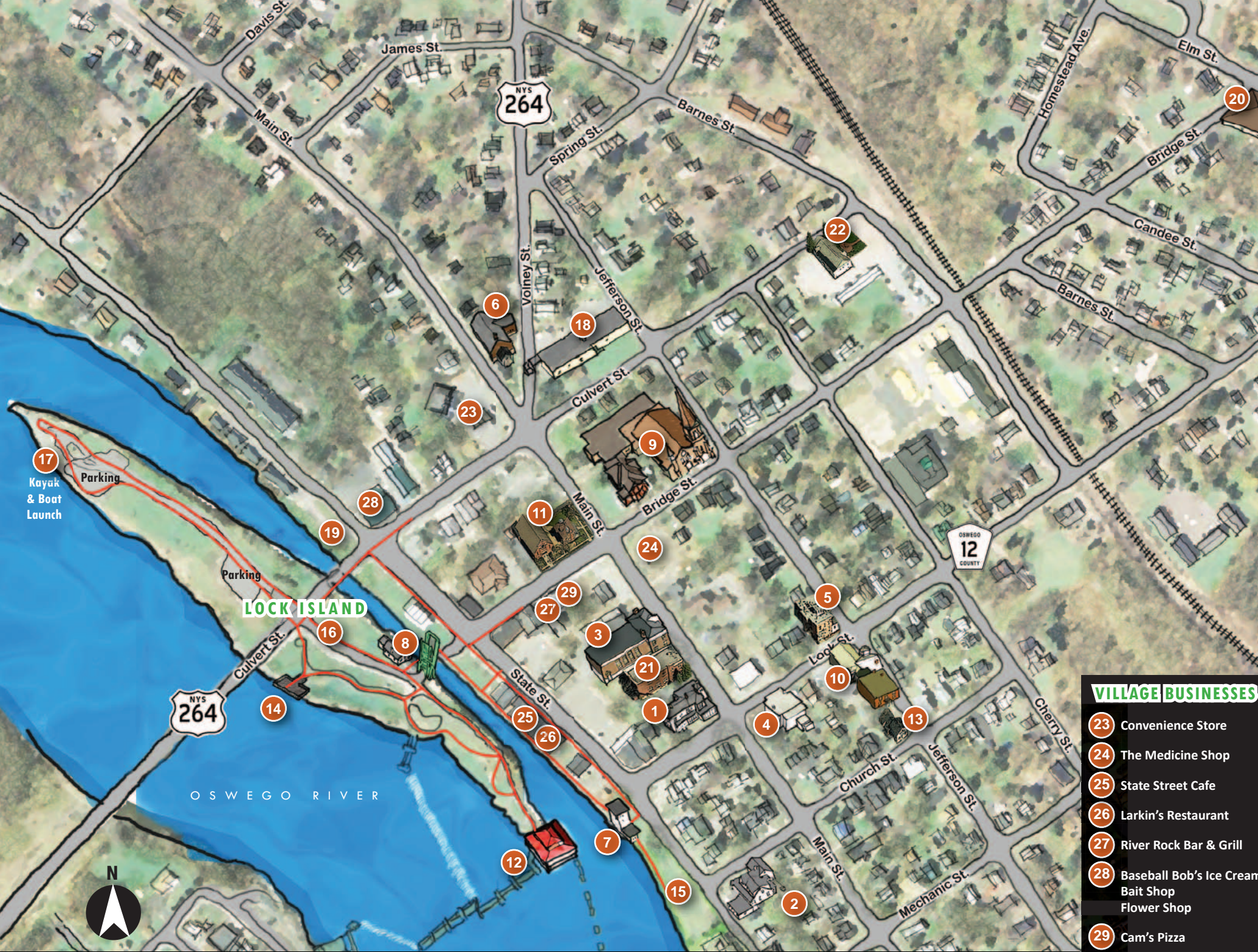
# Welcome to the Village of Phoenix



## An Historic Canal Community

Created with funding provided by the  
Erie Canalway National Heritage Corridor Pilot Grant Program  
September 2008

**A Guide to Landmarks, Recreation  
& Community Services**



# Points of interest

## LANDMARKS



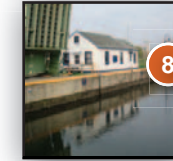
2 c.1887 Queen Anne



4 Italianate House (old Library)



6 Town of Schroepel Historical Society



8 Lock House & Triunion Bridge on Lock Island



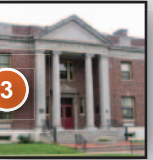
10 First United Methodist Church



12 Lock Island Pavilion



1 Victorian Tower House (survived fire of 1916)



3 Sweet Memorial Building/Village Offices



5 Brick Italianate House c.1860



7 Bridgehouse Museum & Restrooms



9 First Congregational Church



11 St. Stephen's Church



13 National Register House

## COMMUNITY SERVICES

- 18 US Post Office
- 19 Fresh Produce Stand (Monday-Saturday in summer)
- 20 Phoenix Public Library
- 21 Masonic Temple
- 22 VFW

## PARKS & RECREATION

- 14 Lock Island Fishing Platform
- 15 Henley Park
- 16 Lock Island Park
- 17 Kayak & Boat Launch

## VILLAGE BUSINESSES

- 23 Convenience Store
- 24 The Medicine Shop
- 25 State Street Cafe
- 26 Larkin's Restaurant
- 27 River Rock Bar & Grill
- 28 Baseball Bob's Ice Cream Bait Shop Flower Shop
- 29 Cam's Pizza

